
Bergmans Mechatronics LLC

ActiveX Interface Between LabVIEW and Excel

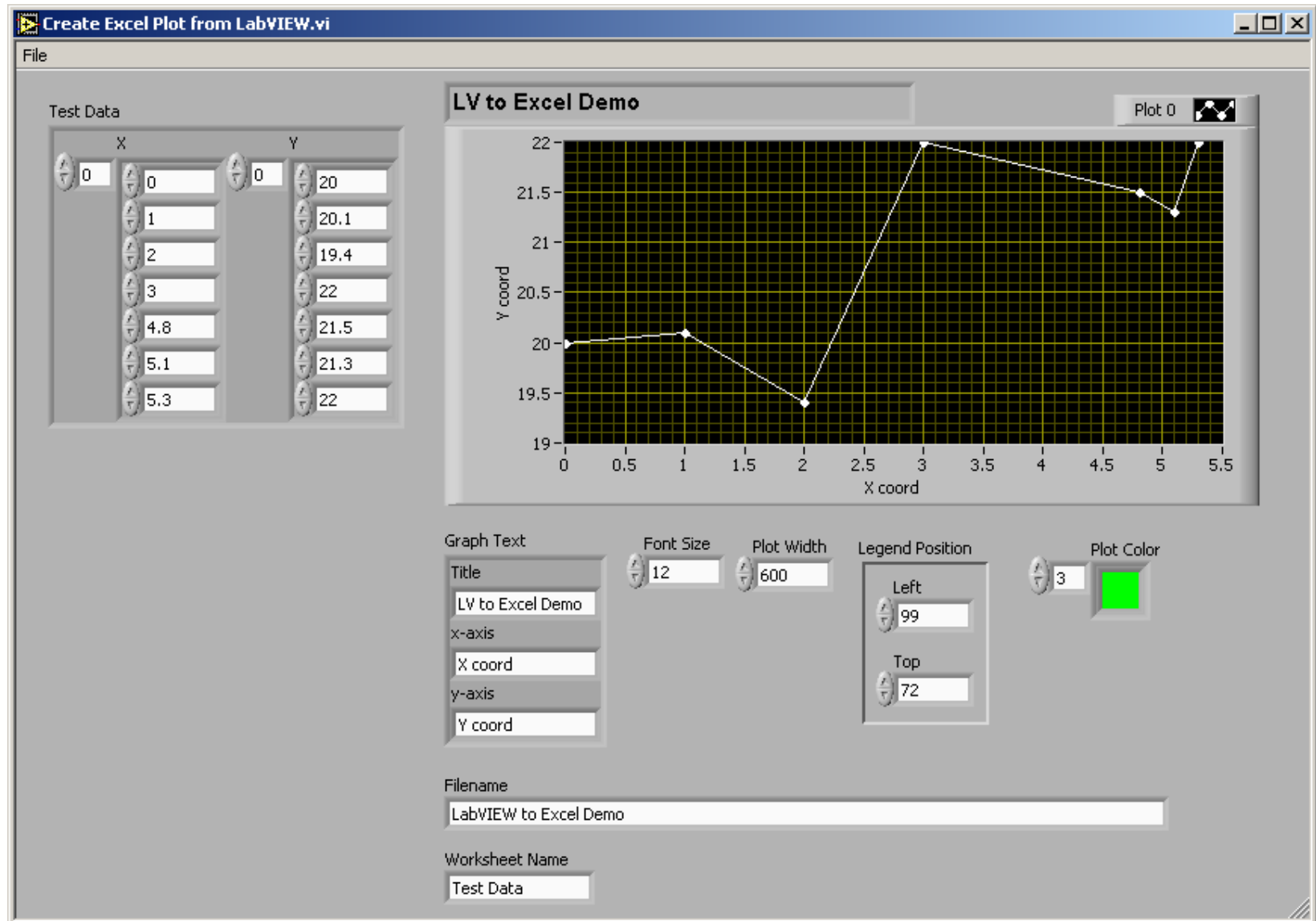
John Bergmans
Bergmans Mechatronics LLC
www.bergmans.com

National Instruments LabVIEW User Group Meeting
Santa Ana, CA
Oct 30 2008



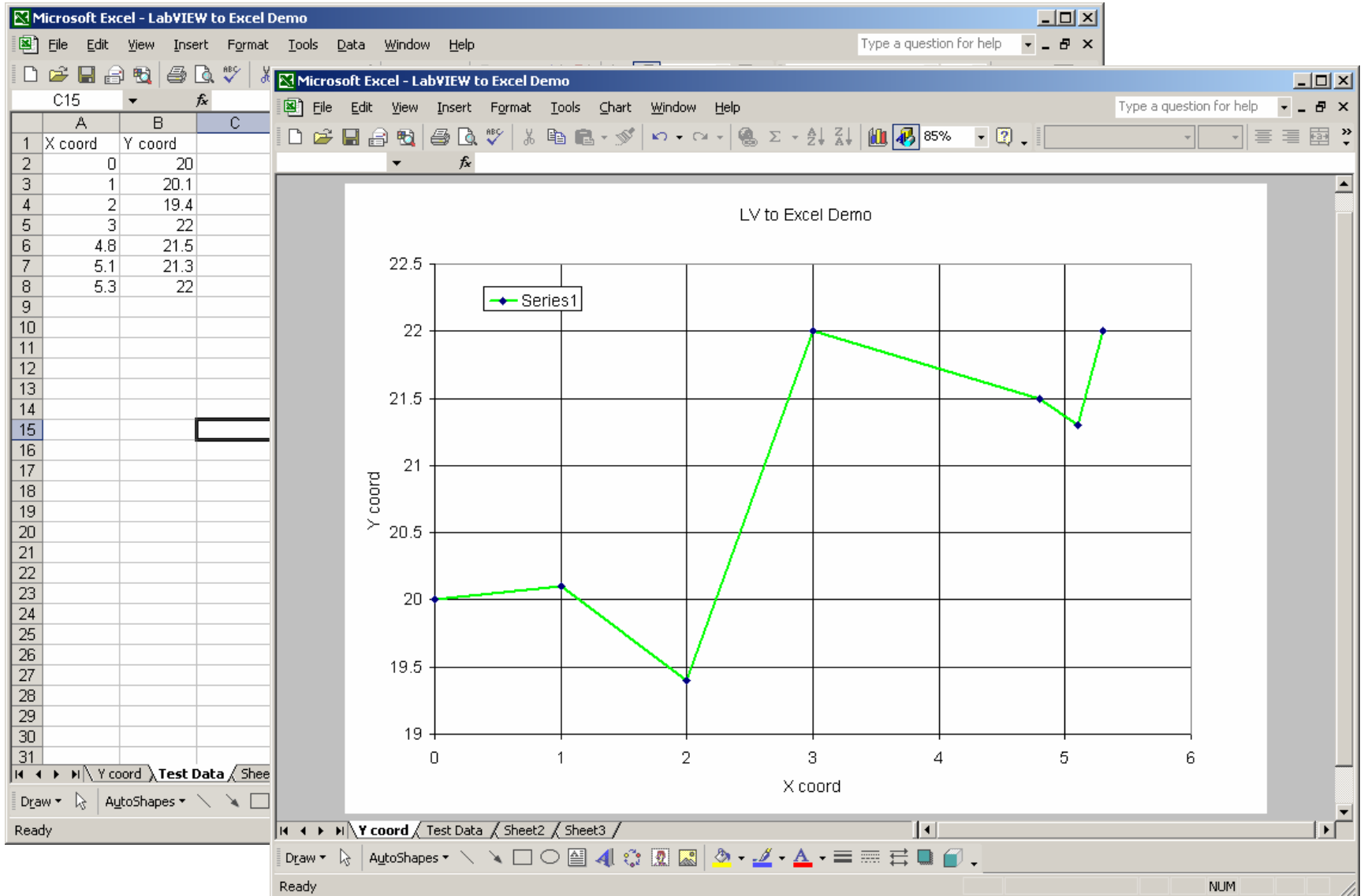
*Celebrating Five Years
of Technology Development
2003 - 2008*

- Bergmans Mechatronics LLC specializes in the development of custom LabVIEW software and instrumentation products
- Current BML products for large scale combustion diagnostics
 - LTS-100 Laser Temperature Sensor and
 - Laser Alignment System
- Objective of presentation: Illustrate use of ActiveX interface between LabVIEW and Microsoft Excel
- Motivation – Processing of several weeks of Laser Alignment System test data



Excel Data and Plot

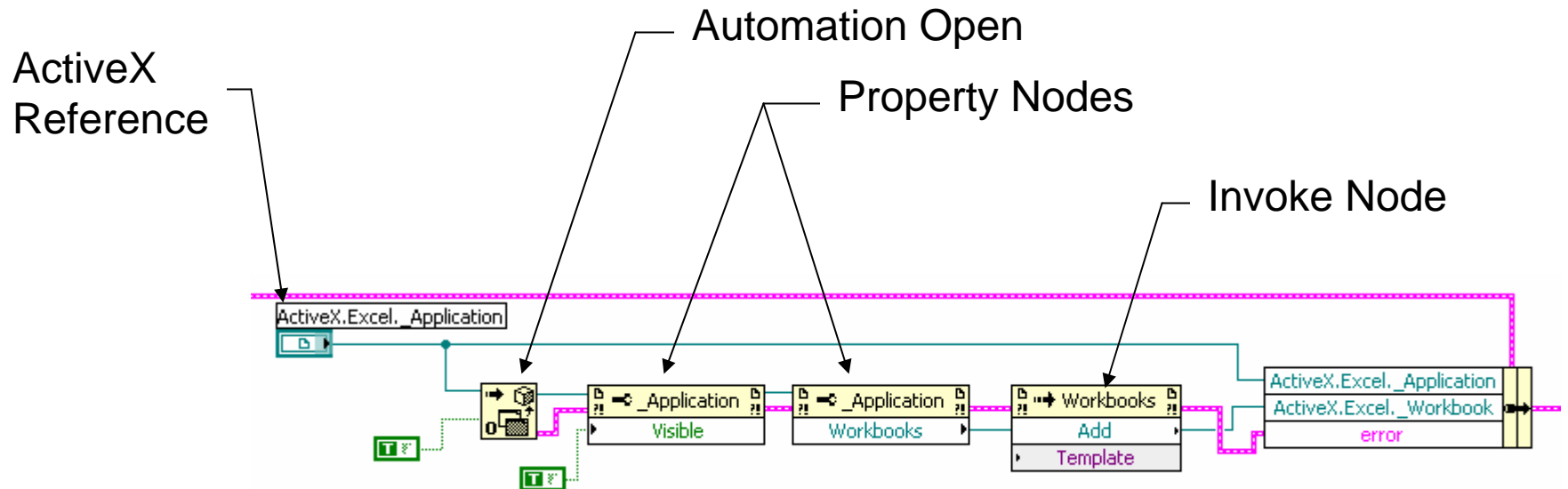
BML



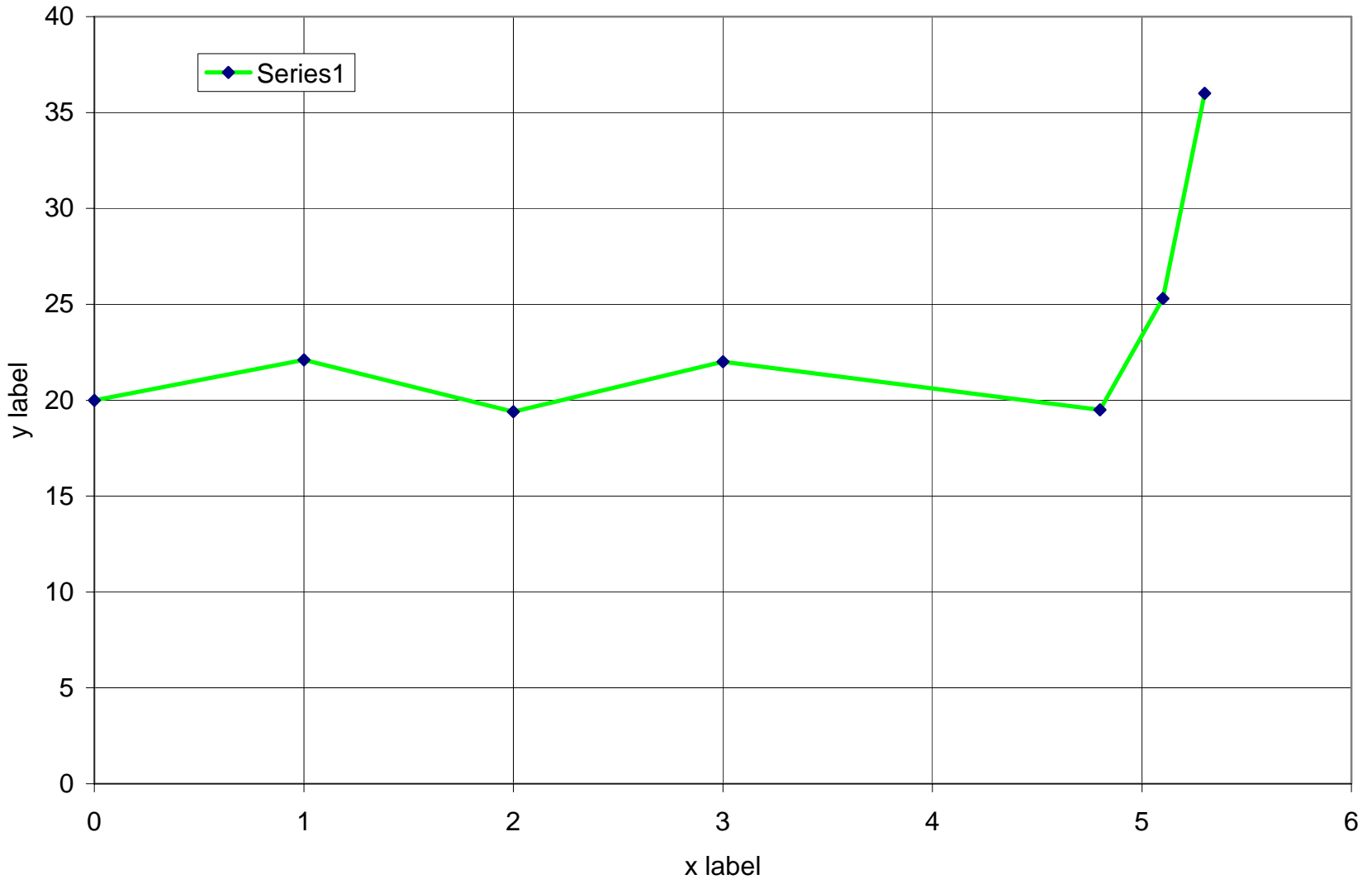
LabVIEW Code Highlights

BML

Excel functions are accessed primarily via
Property Nodes and Invoke Nodes



BML Stock



- Hint: Use VB macro for insights into Excel constants
- Word, PowerPoint interfaces
- Additional demonstration software in BML “LabVIEW Corner”
 - State Machine Demo
 - Reference Demo
 - Low Pass Filter Demo
- Other interface of possible interest: MySQL